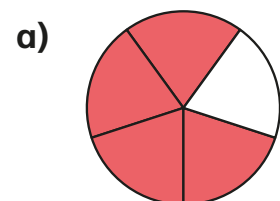
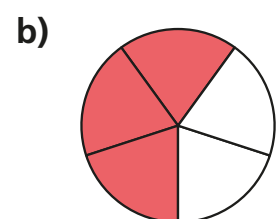


Divide fractions by integers (1)

1 Use the diagrams to help complete the calculations.



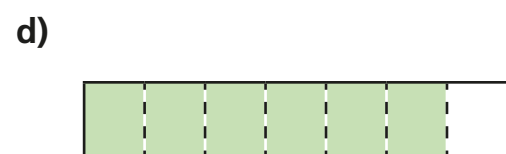
$$\frac{4}{5} \div 4 = \boxed{}$$



$$\frac{3}{5} \div 3 = \boxed{}$$



$$\frac{6}{7} \div 2 = \boxed{}$$



$$\frac{6}{7} \div 3 = \boxed{}$$

2 Huan shares $\frac{8}{10}$ of a litre of juice equally between 4 glasses.
How much juice is in each glass?



3 Complete the divisions.

a) $\boxed{} = \frac{4}{5} \div 2$

b) $\frac{12}{25} \div \boxed{} = \frac{4}{25}$

$$\boxed{} = \frac{4}{10} \div 4$$

$$\frac{12}{25} \div \boxed{} = \frac{3}{25}$$

$$\boxed{} = \frac{4}{20} \div 4$$

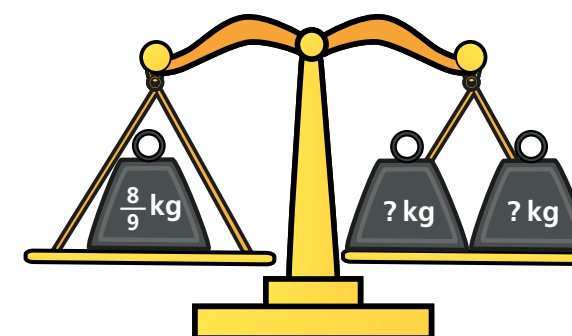
$$\frac{12}{25} \div \boxed{} = \frac{2}{25}$$

$$\boxed{} = \frac{2}{10} \div 2$$

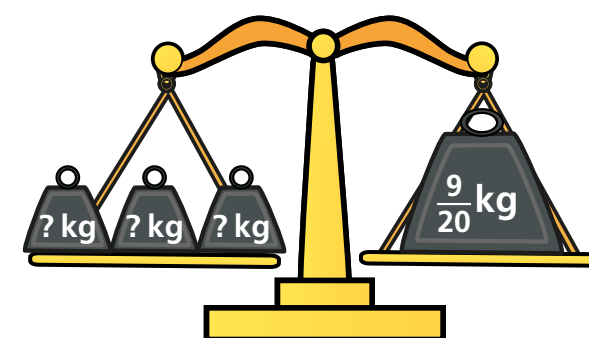
$$\frac{\boxed{}}{25} \div 6 = \frac{4}{25}$$

4 Calculate the weights.

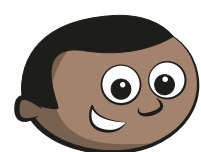
a)



b)



- 5 Mo works out $\frac{10}{25} \div 5$



The answer is $\frac{2}{5}$

- a) What mistake has Mo made?

- b) Draw diagrams to show why Mo is wrong.

Talk about your answer with a partner.



- 6 Complete the calculations. Give your answers in their simplest form.

a) $\frac{4}{10} \div 2 = \frac{\boxed{}}{10} = \frac{\boxed{}}{5}$

d) $\frac{18}{45} \div 2 = \frac{\boxed{}}{} = \frac{\boxed{}}{}$

b) $\frac{10}{15} \div 2 = \frac{\boxed{}}{15} = \frac{\boxed{}}{}$

e) $\frac{24}{56} \div 3 = \frac{\boxed{}}{} = \frac{\boxed{}}{}$

c) $\frac{20}{45} \div 4 = \frac{\boxed{}}{} = \frac{\boxed{}}{}$

f) $\frac{\boxed{}}{} = \frac{\boxed{}}{} = \frac{21}{56} \div 3$

- 7 a) Complete the calculation.

$$\frac{6}{8} \div \boxed{} = \frac{1}{4}$$

- b) Find the missing numbers to make this division correct.

$$\frac{24}{\boxed{}} \div \boxed{} = \frac{1}{20}$$

- 8 is a whole number.

is a fraction.

$$\frac{10}{\text{heart}} \div 2 = \frac{1}{2} \times \text{circle}$$

- a) Find values for and .

= $\boxed{}$

= $\boxed{}$

- b) What do you notice? Explain using diagrams or words.

